

PARSONS
— COMPANY —



30 Guardian Way, Dereham, NR20 3UJ
£875 Per Calendar Month



30 Guardian Way, Dereham, NR20 3UJ

£875 Per Calendar Month

****FULLY BOOKED FOR VIEWINGS**** Located on the new Mill View development, this brand new end of terrace house boasts bright accommodation of welcoming hallway, cloakroom, fitted kitchen, L shaped lounge with French doors, 2 bedrooms and a bathroom. The property benefits from off road parking for 2 cars and a fully enclosed rear garden to the rear.

* Application Process *

Before viewing the property, you will be required to complete a basic application form. All applications will then be reviewed, and viewings arranged for those suitable for the property.

For room measurements please click on the floor plan option.

Furnishing: Unfurnished
Available: Immediately
Council Tax: Band TBC
Damage Deposit: £1006.00
Holding Deposit: £201.00

Description

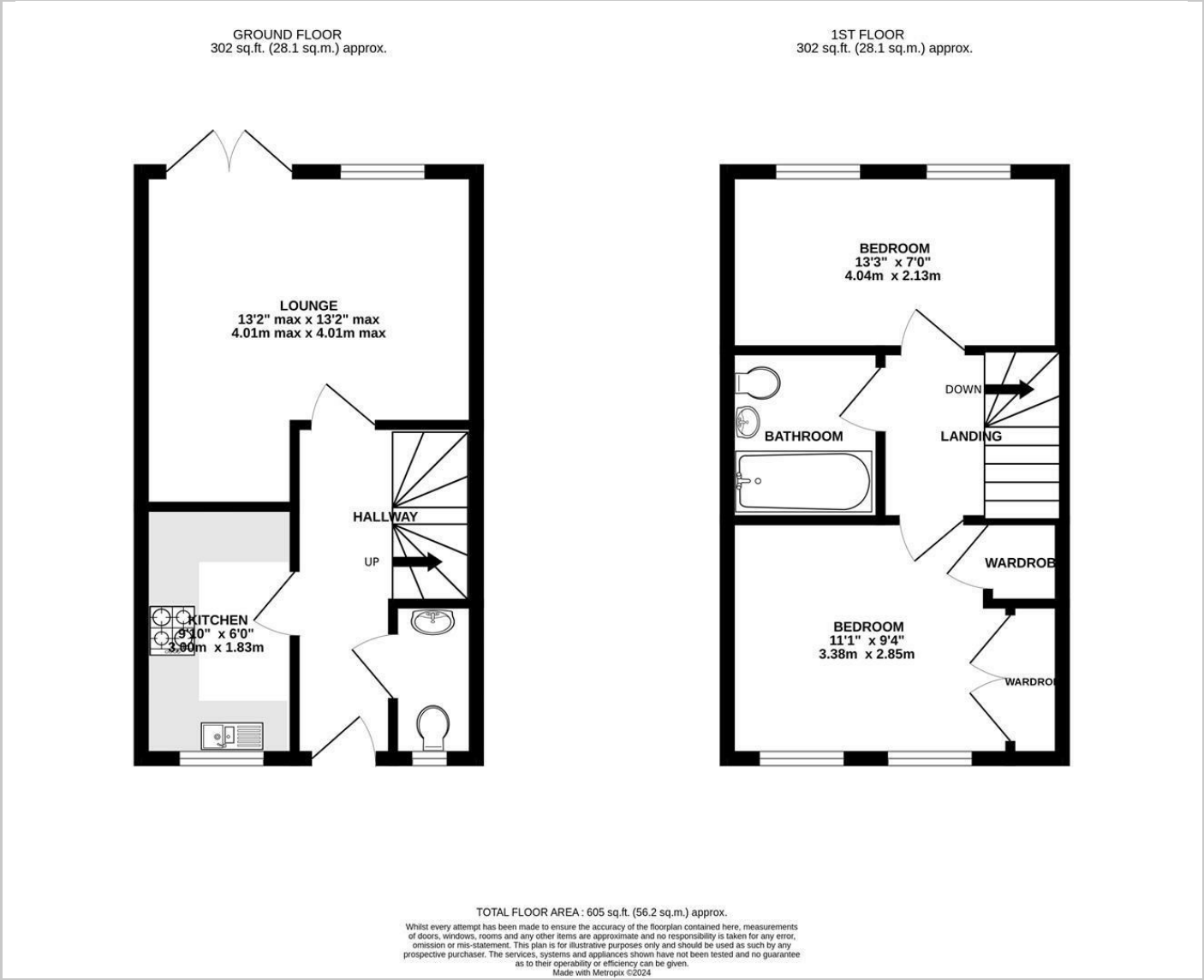


Situation

Unfurnished
Council Tax Band: New Build
Available: 12th October 2024



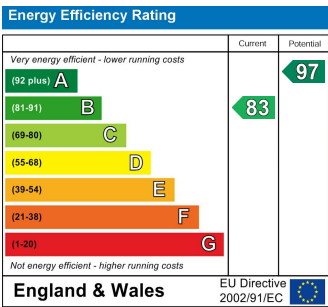
Floor Plans



Area Map



Energy Performance Graph



These particulars, whilst believed to be accurate are set out as a general outline only for guidance and do not constitute any part of an offer or contract. Intending purchasers should not rely on them as statements of representation of fact, but must satisfy themselves by inspection or otherwise as to their accuracy. No person in this firms employment has the authority to make or give any representation or warranty in respect of the property.